

PLANNING YOUR VISIT



OPENING TIMES

The Big Bang Fair is open to schools from 22 to 24 June 2022 from:

- Wednesday, Thursday and Friday 9:30am to 3:30pm

Please arrive during your allocated arrival time. We may not be able to accommodate early arrivals.

Your arrival time will be displayed on your e-ticket.

The Big Bang Fair Unlocked is open to schools, families, home educators and community groups on:

- Thursday 4pm to 8pm

HEALTH & SAFETY

The Big Bang Fair's visiting schools [risk assessment can be downloaded here](#).

VENUE DETAILS

The Big Bang Fair takes place in halls 11 and 12 of the NEC.

Address: NEC, Birmingham, West Midlands, B40 1NT

TRAVEL INFORMATION

If arriving by coach, [please display this sign](#) in your window to ensure you are directed to the appropriate car park. Please follow any instructions from the traffic management team.

If you require access for disabled coach parking, we will contact you separately with this information.

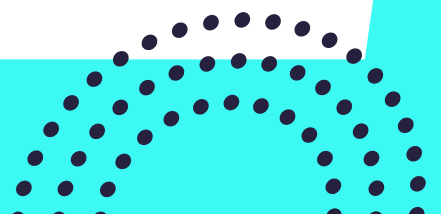
Please note there is a [parking charge](#), further details are available on the NEC website.

CHECK-IN INFO

Upon arrival at the NEC, please follow the signs and guides towards the registration area.

Please ensure your whole group check-in together. At check-in, you will be presented with lanyard.

Please wear these at all times, you will not be allowed into the event areas without them.



PLANNING YOUR VISIT



ACCESSIBILITY

The Big Bang Fair and NEC aim to be accessible for all.

Find out more about [facilities at the NEC here](#).

If you would like to talk to a member of the team about specific requirements for your group, please contact info@thebigbang.org.uk.

CATERING

The Big Bang Fair has picnic areas available for those who wish to bring a packed lunch. There are also catering facilities inside the exhibition space for those who wish to purchase food at the venue.

You can find out about the many catering facilities available to you by visiting the [food and drink](#) section of the NEC website.

SOCIAL MEDIA

Get the latest news about The Big Bang Fair by following us on social media:

- **Youtube:** [/BigBangUKSTEM](#)
- **Twitter:** [@BigBangUKSTEM](#)
- **Facebook:** [@BigBangUKSTEM](#)
- **Instagram:** [@BigBangUKSTEM](#)

We'd love to see what you're up to! Please tag us in your posts using #BigBangFair

GOT QUESTIONS?

We are happy to advise group leaders who are planning or booking a visit. Please email info@thebigbang.org.uk with your query and we will aim to respond to you within 48 hours.

The usual working hours of the team are 9am – 5pm on weekdays.

When at The Big Bang Fair please visit the Information Desk or ask one of our many volunteers.